



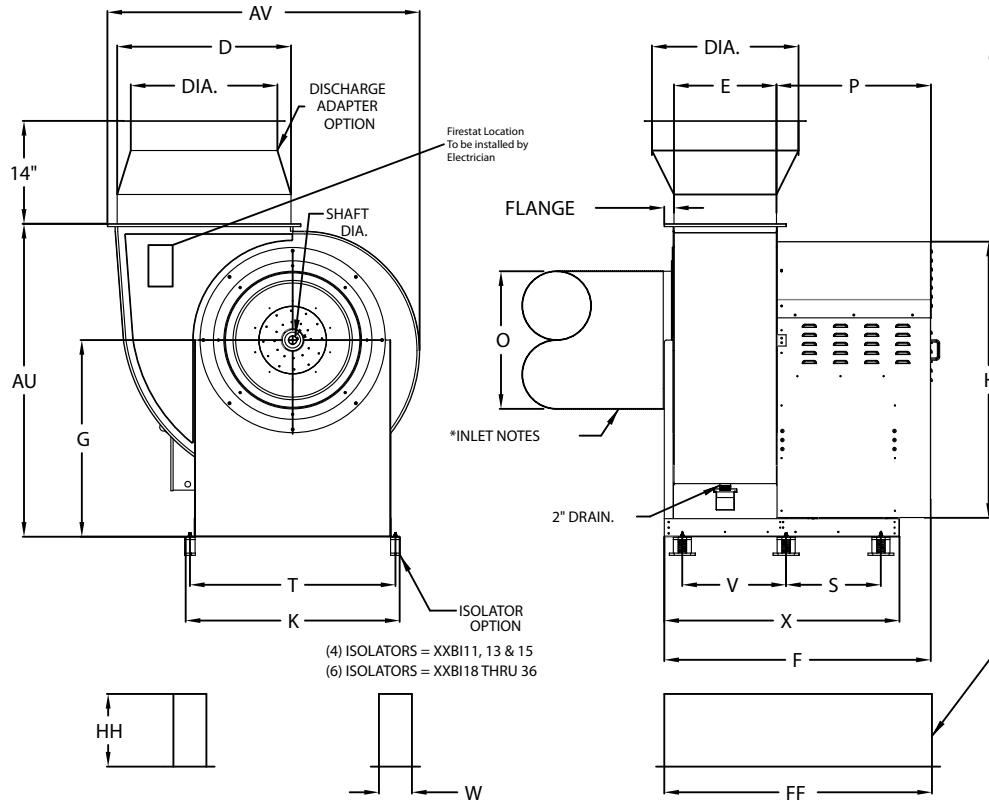
General and Restaurant Duty Utility Set

ZVS-USBIDD-RM



BI SERIES RESTAURANT DUTY UTILITY SET - VERTICAL DISCHARGE UPPER LEFT WITH DISCHARGE ADAPTER

BI/UL ADR UL762 Utility Set
REV#5 08/14/2019



(4) ISOLATORS = XXBI11, 13 & 15
(6) ISOLATORS = XXBI18 THRU 36

- OPTIONS:**
- GREASE BOX
 - SHAFT SEAL
 - VIBRATION ISOLATORS
 - EXTENSION
 - INLET ADAPTERS
 - INLET RISER
 - SUPPORT RAILS
 - RAIN CAP
 - DISCHARGE ADAPTER

- FEATURES:**
- ROOF MOUNTED FANS
 - UL705
 - UL762 & ULC-S645 (RESTAURANT MODEL)
 - HIGH HEAT OPERATION DIRECT DRIVE 350°F (176°C)
 - HIGH HEAT OPERATION BELT DRIVE 350°F (176°C)
 - HEAT SLINGER
 - GREASE CLASSIFICATION TESTING
 - 2" DRAIN
 - MOTOR WEATHER COVER
 - FULLY SEALED SCROLL HOUSING
 - SCROLL ACCESS DOOR
 - FLANGE 1 1/4" - 11 THRU 20.
 - FLANGE 2" - 24 THRU 36.

NORMAL TEMPERATURE TEST BELT DRIVE
EXHAUST FAN MUST OPERATE CONTINUOUSLY WHILE EXHAUSTING AIR AT 350°F (176°C) UNTIL ALL FAN PARTS HAVE REACHED THERMAL EQUILIBRIUM, AND WITHOUT ANY DETERIORATING EFFECTS TO THE FAN WHICH WOULD CAUSE UNSAFE OPERATION.

NORMAL TEMPERATURE TEST DIRECT DRIVE
EXHAUST FAN MUST OPERATE CONTINUOUSLY WHILE EXHAUSTING AIR AT 350°F (176°C) UNTIL ALL FAN PARTS HAVE REACHED THERMAL EQUILIBRIUM, AND WITHOUT ANY DETERIORATING EFFECTS TO THE FAN WHICH WOULD CAUSE UNSAFE OPERATION.

*** INLET NOTES:**
LENGTH OF THE STRAIGHT DUCT ON THE INLET TO BE 3 TIMES THE EQUIVALENT DUCT DIAMETER BEFORE CONNECTING TO ANY FITTINGS SUCH AS ELBOWS TO AVOID SYSTEM EFFECT.

DIRECT DRIVE SHAFT DIA. MAY CHANGE DUE TO MOTOR SELECTED HP / FRAME SIZE.

RESTAURANT DUTY UTILITY SET DIMENSIONAL DATA

FAN MODEL	AU	AV	D	E	F	G	H	K	O	P	S	T	V	X	SHAFT BD DIA.	APPROX SHIPPING (LBS)	SHAFT DD DIA.	APPROX SHIPPING (LBS)	ADAPTER DIAMETER DIA.	HH	W	FF
BI 11	27 1/8	22 1/2	12	11 1/4	29 1/2	18	25 5/8	17 5/8	12 1/2	17 1/2	12 3/4	16 3/8	12 1/8	25 3/4	1	165	7/8	155	12	10	4	36
BI 13	31 3/8	26	14	11 3/4	31	20 7/8	29 7/8	19 5/8	13 1/2	18 1/4	12 7/8	18 3/8	12 7/8	26 1/2	1	190	7/8	180	14	10	4	36
BI 15	35 3/4	29 1/2	16 3/8	13 1/8	32 5/8	23 7/8	34 1/4	22	15 1/8	18 3/4	12 3/4	20 3/4	14	27 5/8	1	235	7/8	225	16	10	4	36
BI 18	42 1/8	35	19 1/2	14 5/8	37 1/2	28 3/8	40 5/8	26 1/4	18 1/2	22	12 3/4	25	18 1/4	31 7/8	1 3/16	318	1 1/8	308	20	10	4	48
BI 20	47 7/8	38 1/2	21 1/2	15 3/8	38 1/4	31 3/8	44 3/4	27 7/8	19 5/8	22	12 3/4	26 1/2	18 3/4	32 1/2	1 7/16	373	1 3/8	363	20	10	4	48
BI 24	56 3/8	46 1/2	25 3/4	16 7/8	49 1/4	37 1/4	52 1/4	34 7/8	25 1/4	30 1/2	19 1/4	33	17 1/4	42 3/8	1 7/16	684	1 5/8	634	24	10	4	60
BI 30	61 7/8	57 1/2	32	19 1/4	52 1/4	38 3/4	56 1/2	41 5/8	24 3/8	31 1/4	20 1/2	39 3/4	18 1/2	45 1/8	1 15/16	999	1 5/8	949	24	10	4	60
BI 36	69 1/4	69	38 5/8	22 7/8	59	43 1/2	65 3/8	47 3/8	30 1/2	34	21	45 1/2	23	52	1 15/16	1280	1 5/8	1220	30	10	4	69