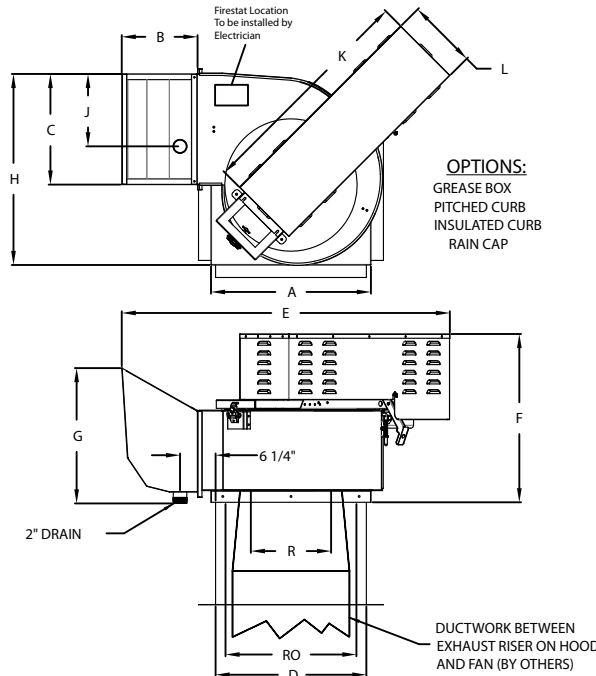
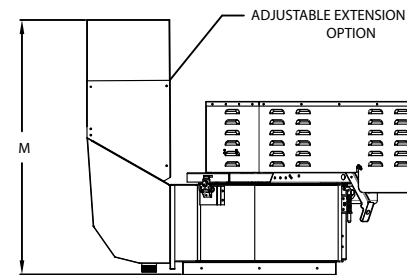
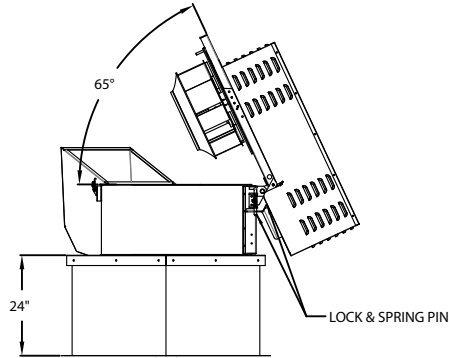


Upblast Centrifugal Utility Set

ZVS-CASRE-BD



RE SERIES UP BLAST RESTAURANT DUTY UTILITY SET



FEATURES:

- ROOF MOUNTED FANS
- RESTAURANT MODEL
- UL762 & ULC-5645
- HIGH HEAT OPERATION DIRECT DRIVE 300°F (149°C)
- HIGH HEAT OPERATION BELT DRIVE 500°F (260°C)
- HEAT SLINGER
- GREASE CLASSIFICATION TESTING
- TILT OUT WHEEL
- LOCKING PIN FOR POWER PACK
- MOTOR WEATHER COVER
- INTERLOCKED DISCONNECT SWITCH

NORMAL TEMPERATURE TEST BELT DRIVE
EXHAUST FAN MUST OPERATE CONTINUOUSLY WHILE EXHAUSTING AIR AT 500°F (260°C) UNTIL ALL FAN PARTS HAVE REACHED THERMAL EQUILIBRIUM, AND WITHOUT ANY DETERIORATING EFFECTS TO THE FAN WHICH WOULD CAUSE UNSAFE OPERATION.

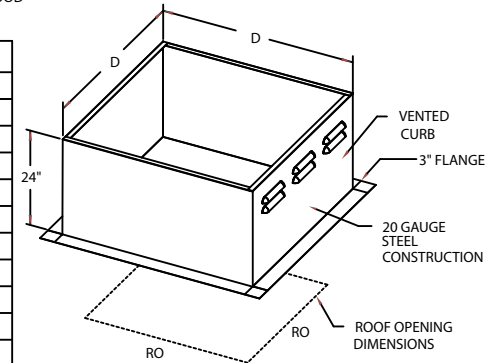
NORMAL TEMPERATURE TEST DIRECT DRIVE
EXHAUST FAN MUST OPERATE CONTINUOUSLY WHILE EXHAUSTING AIR AT 300°F (149°C) UNTIL ALL FAN PARTS HAVE REACHED THERMAL EQUILIBRIUM, AND WITHOUT ANY DETERIORATING EFFECTS TO THE FAN WHICH WOULD CAUSE UNSAFE OPERATION.

ABNORMAL FLARE-UP TEST BELT & DIRECT DRIVE
EXHAUST FAN MUST OPERATE CONTINUOUSLY WHILE EXHAUSTING BURNING GREASE VAPORS AT 600°F (316°C) FOR A PERIOD OF 15 MINUTES WITHOUT THE FAN BECOMING DAMAGED TO ANY EXTENT THAT COULD CAUSE AN UNSAFE CONDITION.

RE Utility Set
REU1A12 6/13/2019

MODEL RE UP BLAST RESTAURANT DUTY (UL762) UTILITY SET DIMENSIONAL DATA

FAN MODEL	A	B	C	D	E	F	G	H	J	K	L	M	R	RO	SHAFT DIA.	APPROX SHIPPING (LBS)
RE11DD	21	12 1/2	13 7/8	19 1/2	41	28 1/4	19 3/4	24 7/8	10	24 1/8	14 3/4	40 1/2-50 1/2	13 1/4	17 1/2	7/8	163
RE13BD	21	12 1/2	13 7/8	19 1/2	48 1/2	27	19 3/4	24 7/8	10	34 5/8	14 3/4	40 1/2-50 1/2	13 1/4	17 1/2	1	191
RE13BDHP	21	12 1/2	13 7/8	19 1/2	48 1/2	27	19 3/4	24 7/8	10	34 5/8	14 3/4	40 1/2-50 1/2	13 1/4	17 1/2	1	190
RE13DD	21	12 1/2	13 7/8	19 1/2	41	28 1/4	19 3/4	24 7/8	10	24 1/8	14 3/4	40 1/2-50 1/2	13 1/4	17 1/2	7/8	163
RE15BD	24 3/4	15 3/8	16	23	53 3/4	28	22 1/8	28 3/4	11	36 5/8	14 3/4	43 - 53	14 7/8	21	1	229
RE15BDHP	24 3/4	15 3/8	16	23	53 3/4	28	22 1/8	28 3/4	11	36 5/8	14 3/4	43 - 53	14 7/8	21	1	228
RE15DD	24 3/4	15 3/8	16	23	46 1/4	29 3/8	22 1/8	28 3/4	11	26 1/8	14 3/8	43 - 53	14 7/8	21	7/8	198
RE18BD	28	15 3/8	19 1/4	26 1/2	57 1/2	29 1/2	23 3/4	33 1/2	12 3/4	40	14 13/16	44 1/2-54 1/2	16 1/2	24	1	264
RE18BDHP	28	15 3/8	19 1/4	26 1/2	57 1/2	29 1/2	23 3/4	33 1/2	12 3/4	40	14 13/16	44 1/2-54 1/2	16 1/2	24	1	263
RE18DD	28	15 3/8	19 1/4	26 1/2	50 1/8	30 7/8	23 3/4	33 1/2	12 3/4	29 1/2	14 3/8	44 1/2-54 1/2	16 1/2	24	7/8	228
RE20BD	28	17	21 1/4	26 1/2	63 7/8	32	25 5/8	35 5/8	12	44 1/2	18 13/16	46 - 56	18	24	1	323
RE20BDHP	28	17	21 1/4	26 1/2	63 7/8	32	25 5/8	35 5/8	12	44 1/2	18 13/16	46 - 56	18	24	1	321
RE20DD	28	17	21 1/4	26 1/2	55 1/2	35	25 5/8	35 5/8	12	44 1/2	18 13/16	46 - 56	18	24	1 1/8	302
RE24BD	33	19	25 1/2	31 1/2	73	36	28 7/8	42 3/8	14 3/4	51 3/8	21 5/8	50 - 60	23 7/8	28	1	414
RE24BDHP	33	19	25 1/2	31 1/2	73	36	28 7/8	42 3/8	14 3/4	51 3/8	21 5/8	50 - 60	23 7/8	28	1	412
RE24DD	33	19	25 1/2	31 1/2	64	38	28 7/8	42 3/8	14 3/4	51 3/8	21 5/8	50 - 60	23 7/8	28	1 3/8	389



PITCHED CURBS ARE AVAILABLE FOR PITCHED ROOFS.

SPECIFY PITCH:
EXAMPLE: 7/12 PITCH = 30° SLOPE

